

Repair Parts for Xtreme™ 85cc Lower, Series B

406888C

ENG



Important Safety Instructions
Read all warnings and instructions in manual 311762. Save those instructions.

NOTE:

Series B Xtreme lowers have the circular groove on the face of the top and bottom filter caps.

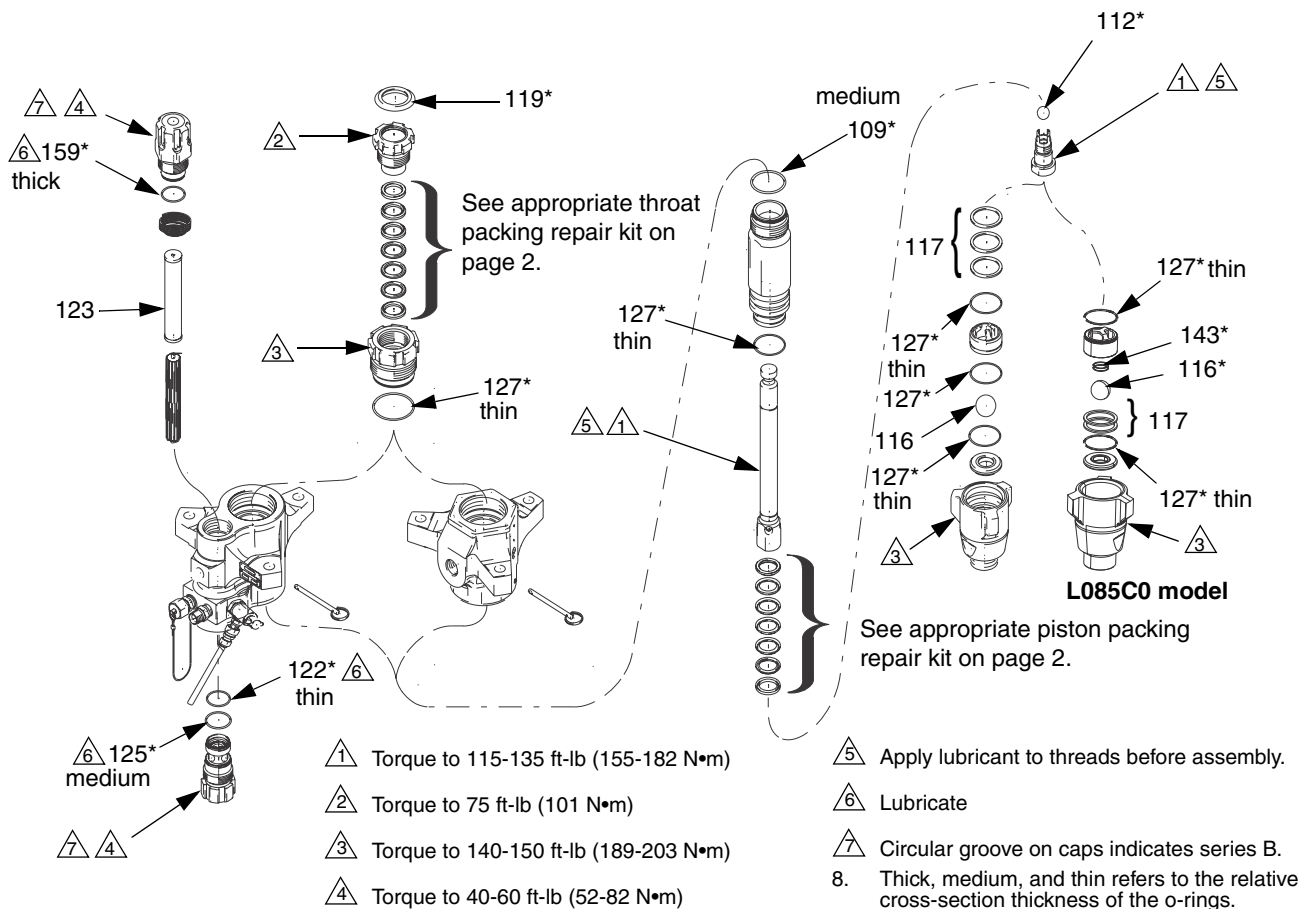
24F973 Xtreme™ Seal Repair Kit

Series A Xtreme lower can use this kit if they are converted to series B with conversion kit 24F974. See manual 406882.

262507 TuffStack™ Seal Repair Kit

Non-filter Xtreme lowers can use either series A or series B repair kits.

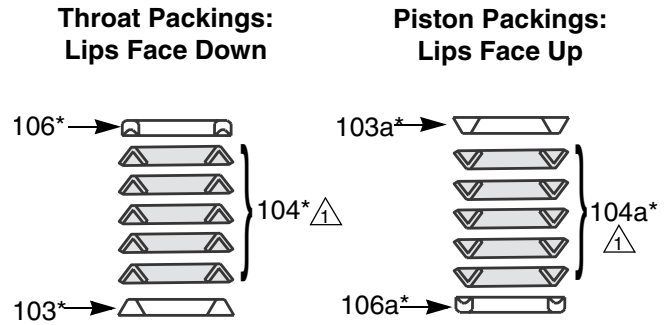
Bulk Pack Replacement Parts



Bulk Pack Replacement Parts

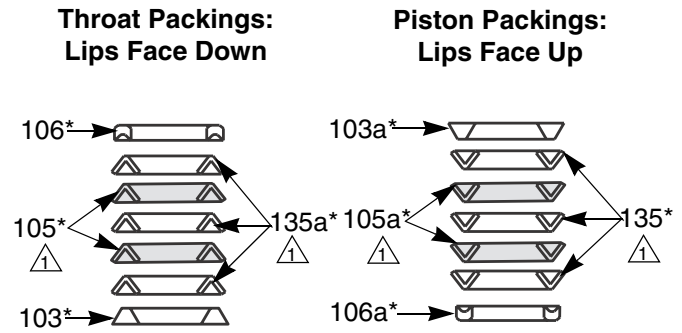
Ref.	Part	Description	Qty.
103*	288074	GLAND, packing, male (4/pack)	1
103a*	288072	GLAND, packing, male (4/pack)	1
104*	288066	V-PACKING, TuffStack; throat (10/pack)	5
104a*	288082	V-PACKING, TuffStack ; piston (10/pack)	5
105*	288076	V-PACKING, leather (10/pack)	2
105a*	288081	V-PACKING, leather (10/pack)	2
106*	288073	GLAND, female, throat (4/pack)	1
106a*	288072	GLAND, female, piston	1
109*	288067	O-RING, PTFE, top cylinder; medium (10/pack)	1
112*	288065	BALL, piston, 9/16 in. (14 mm) diameter (3/pack)	1
116*	244899	BALL, inlet, 1 in. (25 mm) diameter (3/pack)	1
117	288064	SHIM, inlet, ball guide (9/pack)	2 or 3
119*	247393	PLUG, throat seal (10/pack)	1
122*	244895	O-RING, filter; thin, PTFE (10/pack)	1
123	236496	STRAINER, 60 mesh screen (2/pack)	1
123	238446	STRAINER, 60 mesh screen (25/pack)	1
125*	262484	O-RING, filter; medium, PTFE (10/pack)	1
127*	288068	O-RING, PTFE, thin (10/pack)	4 or 5
135*	288077	V-PACKING, Xtreme seal (10/pack)	3
135a*	288080	V-PACKING, Xtreme seal (10/pack)	3
143*	124007	SPRING, foot valve; L085C0 only	1
159*	262483	O-RING, filter, thick; PTFE (10 pack)	1

TuffStack™ Seal Repair Kit 262507



Lubricate Packings

Xtreme™ Seal Repair Kit 24F973



Lubricate Packings

(soak leather packings in oil for 1 hour)

* Included in Seal Repair Kits 262507 and 24F973.

Thick, medium, and thin refers to the relative cross-section thickness of the o-rings.

NOTE: The L085C0 model uses a 30 mesh filter.

All written and visual data contained in this document reflects the latest product information available at the time of publication. Graco reserves the right to make changes at any time without notice.

Original instructions. This manual contains English. MM 406888

Graco Headquarters: Minneapolis

International Offices: Belgium, China, Japan, Korea

GRACO INC. P.O. BOX 1441 MINNEAPOLIS, MN 55440-1441

Copyright 2010, Graco Inc. is registered to ISO 9001

www.graco.com

Revised 02/2011